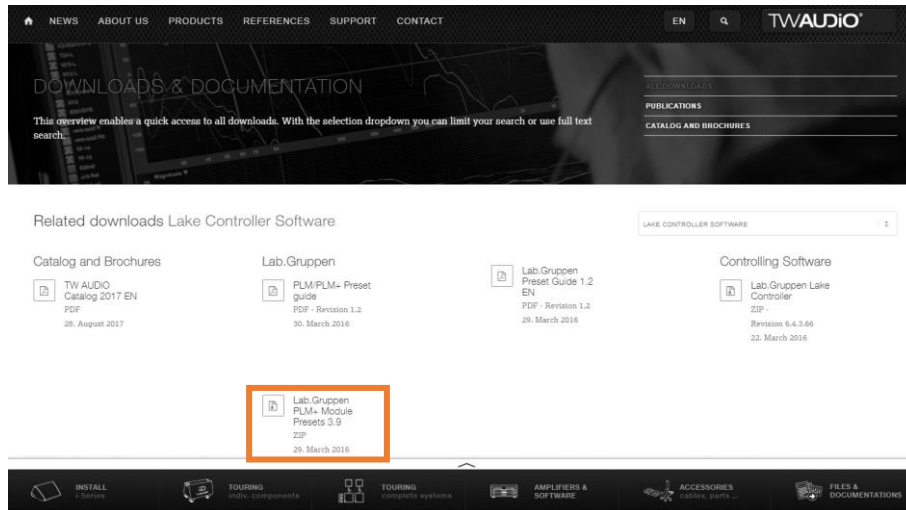


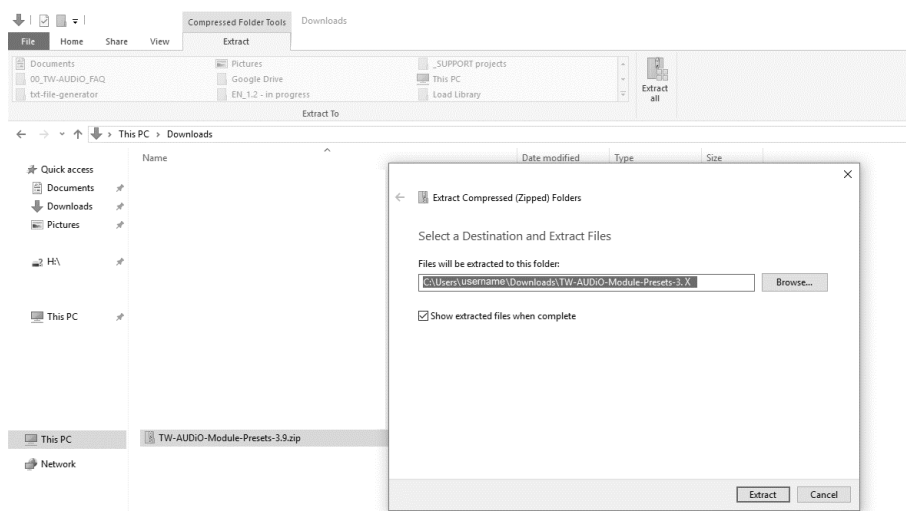
## Update of TW AUDiO Presets in Lake Controller

Please follow this guide only if the presets on the TW AUDiO homepage are newer than the presets included in your current Lake Controller software. *XX* are placeholders which represent the release of the installed Lake Controller. Basically TW AUDiO will provide new presets as soon as possible in the Lake Load Library.

1. Download the latest presets from TW AUDiO website.



2. Unpack the .zip-file.



3. Delete all TW AUDiO preset data from your pc.

Please delete all module and frame presets files which are usually located in the folders:  
 C:\Users\username\Documents\Lake\LakeController\_vXXX\Modules and EQ  
 Overlays\Lake LoadLibrary XXX\Suitable for TW AUDIO loudspeakers

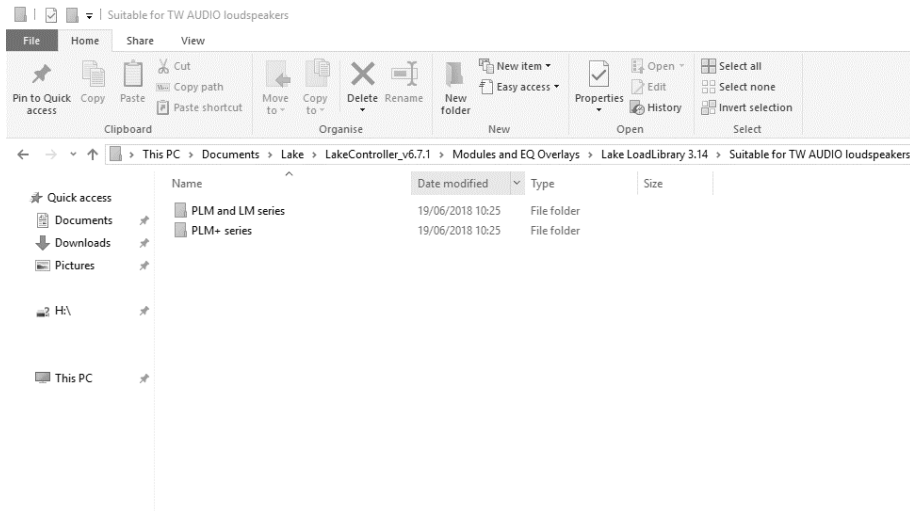
and

C:\Users\username\Documents\Lake\LakeController\_vXXX\FramePresets\LoadLibrary XX  
 Frame Presets\Suitable for TW AUDIO loudspeakers

4. Copy the folders “PLM and LM series” and “PLM+ series” containing module presets in your local Lake folder.

The folder should be located in:

C:\Users\username\Documents\Lake\LakeController\_vXXX\Modules and EQ  
 Overlays\Lake LoadLibrary XX\Suitable for TW AUDIO loudspeakers



5. Copy containing data from folder “Frame presets” in your local Lake folder.

The folder should be located in:

C:\Users\username\Documents\Lake\LakeController\_vXXX\FramePresets\LoadLibrary XX  
 Frame Presets\Suitable for TW AUDIO loudspeakers

